

PLEASE CHECK WWW.MOLEX.COM FOR LATEST PART INFORMATION

Part Number: [0873691100](#)
Status: **Active**
Description: 2.00mm (.079") Pitch Crimp Housing, Single Row, 11 Circuits

Documents:

[3D Model](#) [RoHS Certificate of Compliance \(PDF\)](#)
[Drawing \(PDF\)](#)

Agency Certification

CSA LR19980
 UL E29179

General

Product Family Crimp Housings
 Series [87369](#)
 Product Name N/A

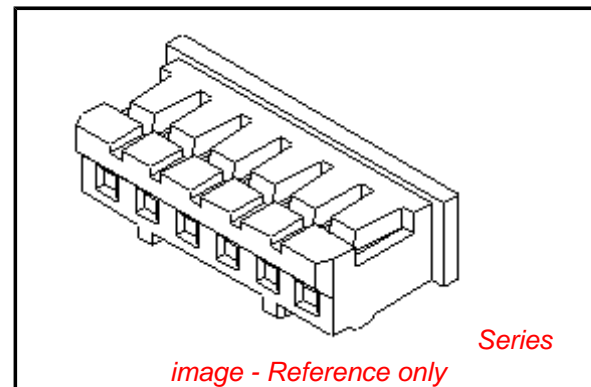
Physical

Circuits (maximum) 11
 Color - Resin Natural
 Flammability 94V-0
 Gender Female
 Glow-Wire Compliant No
 Lock to Mating Part Yes
 Material - Resin Nylon
 Number of Rows 1
 Packaging Type Bag
 Panel Mount No
 Pitch - Mating Interface (in) 0.079 In
 Pitch - Mating Interface (mm) 2.00 mm
 Stackable No
 Temperature Range - Operating -25°C to +85°C

Material Info

Reference - Drawing Numbers

Product Specification RPS-87369-001
 Sales Drawing SD-87369-**0*



EU RoHS

**ELV and RoHS
 Compliant**
**REACH SVHC
 Contains SVHC: No**
**Halogen-Free
 Status**

China RoHS



**Need more information on product
 environmental compliance?**

Email productcompliance@molex.com
 For a multiple part number RoHS Certificate of
 Compliance, [click here](#)

Please visit the [Contact Us](#) section for any
 non-product compliance questions.

Search Parts in this Series

[87369Series](#)

Mates With

[89400](#) Vertical Header, [89401](#) Right Angle
 Header

Use With

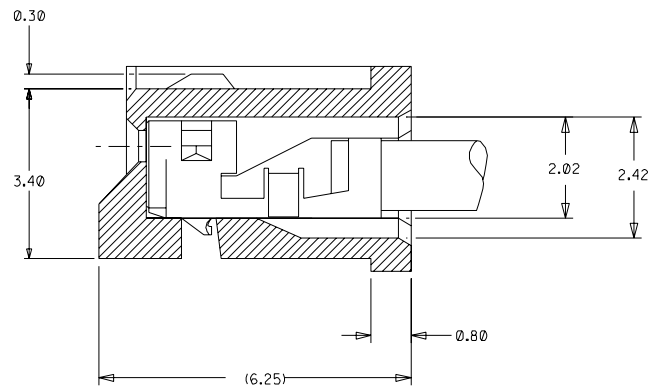
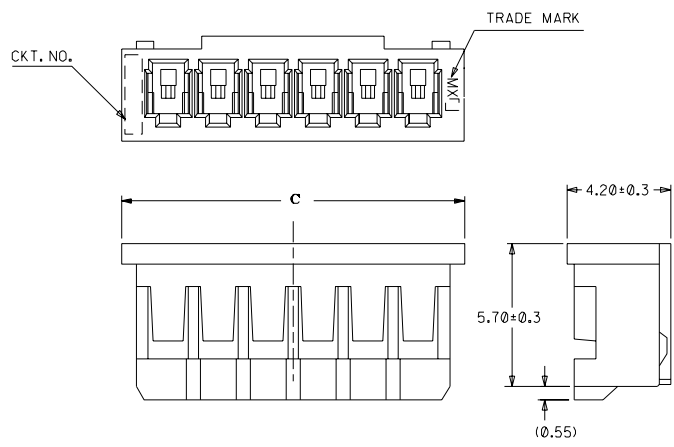
[50212](#) Crimp Terminals. [104440](#) 2.00mm
 (.079") Pitch Crimp Terminals

DWG. NO. SD 87369-**-00

CAD FILE S87369.DGN

▽

DO NOT SCALE DRAWING



TERMINAL ASSEMBLY DRAWING
(10:1)

PART NO.LEGEND

87369 - ** 0 *

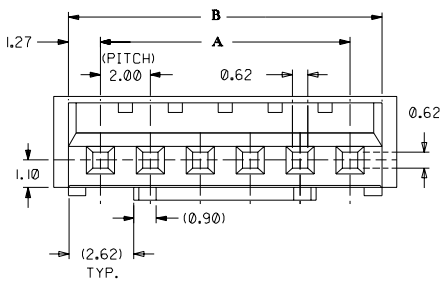
CKT SIZE ———— COLOR OPTION

0 - NATURAL
1 - BLACK
2 - RED
3 - YELLOW
4 - BLUE
5 - GREEN

NOTES

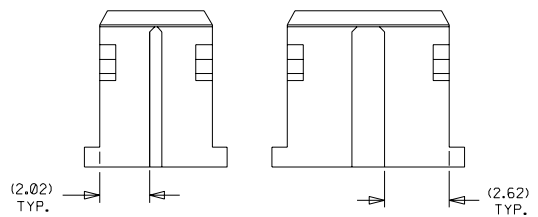
1. APPLICABLE TERMINAL : 50212-8*00
2. MATERIAL : NYLON 66, UL94V-0 NATURAL
3. MATES WITH 89400-**-10/**20 & 89401-**-10

| C | B | A | ENG NO. | CKT |
|-------|-------|----|------------|-----|
| 33.74 | 32.54 | 30 | 87369-160* | 16 |
| 31.74 | 30.54 | 28 | 87369-150* | 15 |
| 29.74 | 28.54 | 26 | 87369-140* | 14 |
| 27.74 | 26.54 | 24 | 87369-130* | 13 |
| 25.74 | 24.54 | 22 | 87369-120* | 12 |
| 23.74 | 22.54 | 20 | 87369-110* | 11 |
| 21.74 | 20.54 | 18 | 87369-100* | 10 |
| 19.74 | 18.54 | 16 | 87369-090* | 9 |
| 17.74 | 16.54 | 14 | 87369-080* | 8 |
| 15.74 | 14.54 | 12 | 87369-070* | 7 |
| 13.74 | 12.54 | 10 | 87369-060* | 6 |
| 11.74 | 10.54 | 8 | 87369-050* | 5 |
| 9.74 | 8.54 | 6 | 87369-040* | 4 |
| 7.74 | 6.54 | 4 | 87369-030* | 3 |
| 5.74 | 4.54 | 2 | 87369-020* | 2 |



**IN CASE OF
2 CIRCUIT HSG.**

**IN CASE OF
3 CIRCUIT HSG.**



UNITS : MM

| | | | | | | | |
|---------------------------|---|--------|---------|-------------------------|---------------------------------|---|-------------------------|
| | | | | MATERIAL : SEE NOTES | | MOLEX SINGAPORE PTE LTD SHEET 1 OF 1 | |
| B5 | REVISE PART NO. LEGEND & NOTE 3 PER ECN 1999-0061 | - | SAK | 980814 | GENERAL TOLERANCES ± 0.20/0.008 | | REV B5 |
| B4 | REL 87369-**-05 (GREEN) AS PER PDR* 98-06-0330 (AS PER ECN* S1998-0617) | - | SEE TOH | 980623 | DWG. NO.: SD 87369-**-0* | | |
| B3 | ADD COLOR OPTION REPLACE SD-87369-**-0* | S60565 | SAK | GMS | 960618 | TITLE : 2.0 MM PITCH WIRE TO BOARD CONN. RECEPTACLE | |
| LTR | REVISION RECORD | ECN | DR | CHK | DATE | DRAWN BY CLEE 920305 | CHK'D BY JOEY 920326 |
| REVISE ONLY ON CAD SYSTEM | | | | | | APPR'D BY ROY 920326 | SCALE 5:1 |